

T - 21 - SC (1/2) SELF-ADHESIVE HANGERS



General description

Self-adhesive hangers are designed to fix efficiently insulation on smooth surfaces such as air ducts, attenuators, chambers and enclosures.

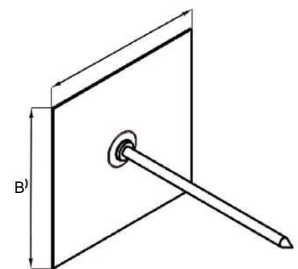
It consists of a pin, firmly mounted on a high quality self-adhesive base.

Locking washers supplied in each box.

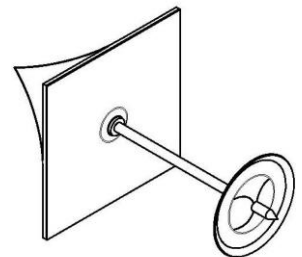


Technical specifications

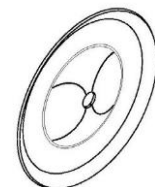
Base	Material	Galvanized steel
	Dimensions (A X B)	50 x 50 mm (2" x 2")
	Thickness	0,4 mm (28 ga.)
Shank	Material	≤ 63 mm (2-1/2") => galvanized steel
		≥ 76 mm (3") => copper plated steel
	Diameter	2,7 mm (12 ga.)
	Lengths	19 to 400 mm (3/4" to 16")



Adhesive	Base	White, cross-linked, closed-cell polyethylene foam
	Coating	Modified acrylate adhesive on both sides
	Liner	Siliconized paper
	Thickness	1 mm (1/25")
Power (FINAT-TM 1, on stainless steel, one side covered with 50 microns polyester film)		
	1 minute	>18 N/25 mm
	20 minutes	tear
	24 hours	tear
Shear strength (FINAT-TM 8, on stainless steel, one side covered with 50 microns polyester film)		
	23 °C	>150 hours
	70 °C	1 hour



Locking washer : CL 2 - 30	Material	Galvanized spring steel
	Diameter	30 mm (1-3/16") - 38 mm (1-1/2") on request
	Thickness	0,35 mm (28 ga.)
	Edges	Bevelled



Information contained herein is based on careful tests and experience. It reflects our knowledge and is for guidance purpose only. It is given in good faith and user should ensure that the product is fit for purpose before any application. The quoted values are average and should not be taken as maximum or minimum values for specific purposes. Manufacturer and distributor are not responsible for any non-recommended use or consequential damage. 2016.06.21

Application recommendation

Quantity	8 to 12 hangers per square meter (1,20 sq Yd) are required in standard condition.
Application	* Surfaces should be clean and dry, free of dust, grease, oil and any other loose matter. * Avoid to use degreasing - products * Not for use in application likely to make contact with chlorinated, cetonic or esther solvents
Application temperature	+15 °C to +25 °C (+60°F to +80°F)
Holding temperature	-40 °C to +80 °C (-40°F to +180°F)

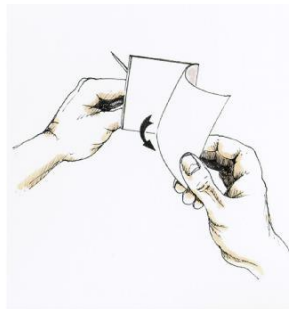
Storage

2 years when stored in a dry place. +10 °C to +30 °C (+50°F to +90°F), with 50% relative humidity.

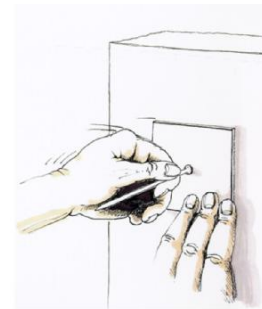
Application



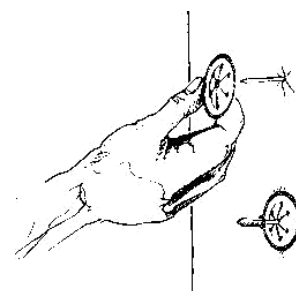
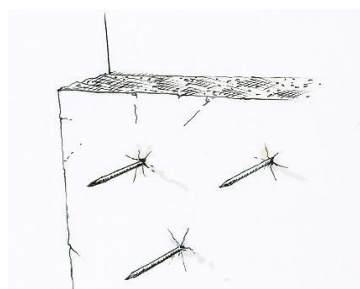
Apply at temperature range +15°C to +25°C (+60°F to +80°F). Surfaces should be clean and dry, free of dust, grease, oil and any other loose matter. Do not use degreasing products. Not for use in application likely to make contact with chlorinated, cetonic or esther solvents.



Remove the protective release paper taking care not to touch the adhesive



Place the hanger in the required position and press the base against the surface to be insulated



Insulation can be impaled immediately and firmly locked with locking washers, but maximum strength of adherence is achieved afetr 24 hours. If necessary, cover the pin with protective cap.

Information contained herein is based on careful tests and experience. It reflects our knowledge and is for guidance purpose only. It is given in good faith and user should ensure that the product is fit for purpose before any application. The quoted values are average and should not be taken as maximum or minimum values for specific purposes. Manufacturer and distributor are not responsible for any non-recommended use or consequential damage.